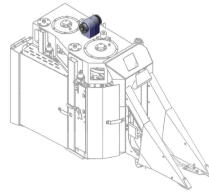




PICKING UNIT GEAR CASE

MODELS 9960 - 9965

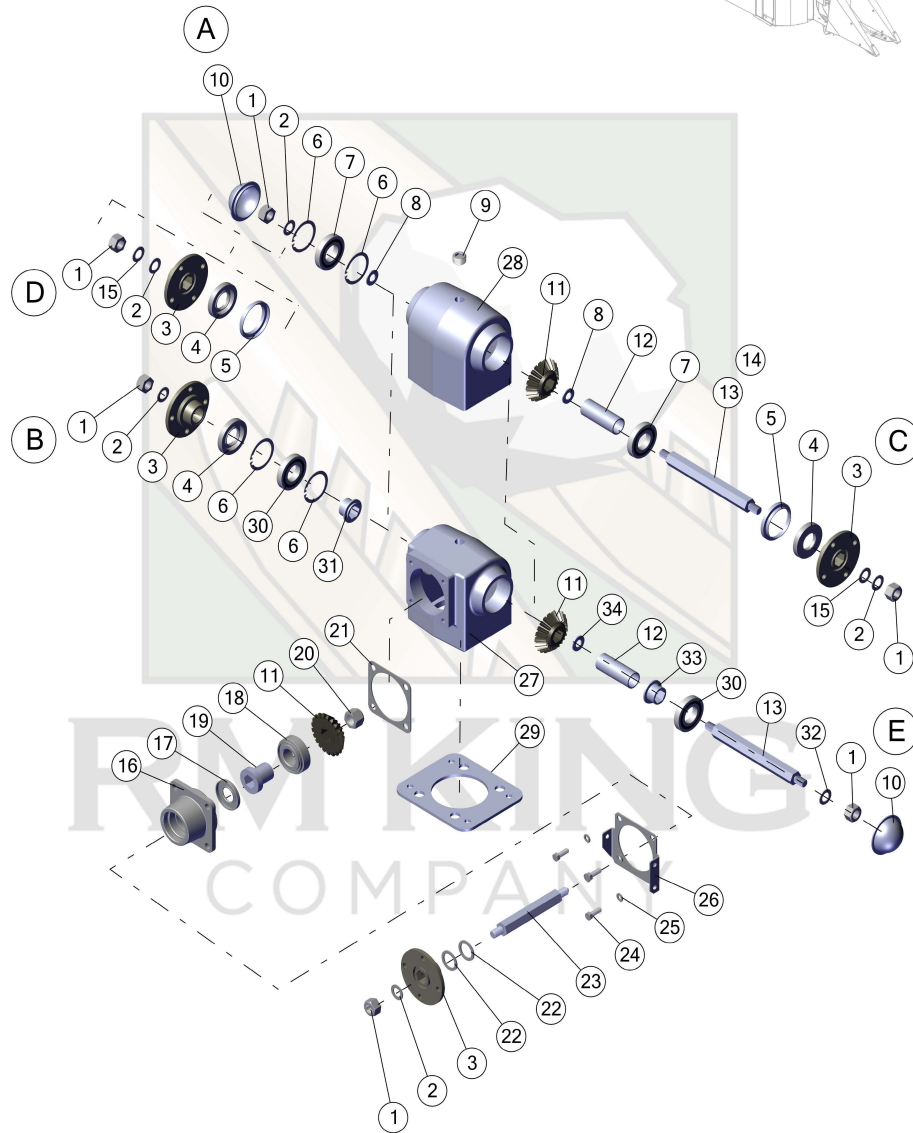
Version 1.7



PICKING UNIT GEAR CASE

MODELS 9960 - 9965

Version 1.7



ID	Part Number	Description	Model	MFG
1	N33203	Nut	9960-9965	RMK
2	E38485	Washer	9960-9965	OEM
3	N272796	Gear Box Flange	9965	RMK
4	48M7050	Seal	9960-9965	RMK
5	N272705	Sleeve	9965	OEM
6	N123156	Snap Ring	9960-9996	RMK
7	JD9353	Bearing	9960-9965	RMK
8	N196911	Washer	9960-9965	OEM
9	N199866	Pipe Plug	9960-9965	RMK
10	32169	Cap	9960-9965	OEM
11	N196928	Gear	9960-9965	RMK
12	N126500	Spacer	9960-9965	OEM
13	N272892	Drive Shaft Inner and Outer Unit	9960-9965	RMK
14	N196421	Drive Shaft Middle Units	9960-9965	RMK
15	24H1475	Washer	9960-9965	OEM
16	N118641	Housing	9960-9965	RMK
17	AN71194	Seal	9960-9965	RMK
18	AU13137	Bearing	9960-9965	OEM
19	N197572	Bushing	9960-9965	RMK
20	N198341	Lock Nut - 7/8	9960-9965	RMK
21	N71920	Shim	9960-9965	OEM
22	24H1492	Washer	9960-9965	OEM
23	N197571	Drive Shaft	9960-9965	RMK
24	19H3483	Bolt - 3/8 x 1-1/8	9960-9965	RMK
25	12H304	Lock Washer	9960-9965	RMK
26	N197475	Bracket	9960-9965	RMK
27	N197405	Housing Inner	9960-9965	RMK
28	N110762	Housing Middle or Outer Units	9960-9965	OEM
29	TRANSP60	Gear Case Support Plate	9960-9965	RMK
30	AN142665	Bearing	9960-9965	RMK
31	N196915	Bushing	9960-9965	OEM
32	R54124	Washer	9960-9965	OEM
33	N197437	Bushing	9960-9965	OEM
34	N198127	Washer	9960-9965	OEM

NOTES:

13. N272892 REPLACES N198667 AND N197570.

29. GEAR CASE SUPPORT PLATE IS DESIGNED TO REINFORCE CABINET AND PREVENT CRACKING.

L.H. OUTER – USES OUTPUTS A AND C FROM LEFT TO RIGHT.

L.H. INNER – USES OUTPUTS B AND E FROM LEFT TO RIGHT.

R.H. OUTER – USES OUTPUTS C AND A FROM LEFT TO RIGHT.

R.H. INNER – USES OUTPUTS E AND B FROM LEFT TO RIGHT.

MIDDLE – USES OUTPUTS D AND C FROM LEFT TO RIGHT.

PARTS FOR MODEL YEARS 9900-9950 NOT SHOWN, PLEASE CALL FOR AVAILABILITY.

EMAIL: INFO@RMKING.COM
TEL: 559.266.0258

EMAIL: INFO@RMKING.COM
TEL: 559.266.0258