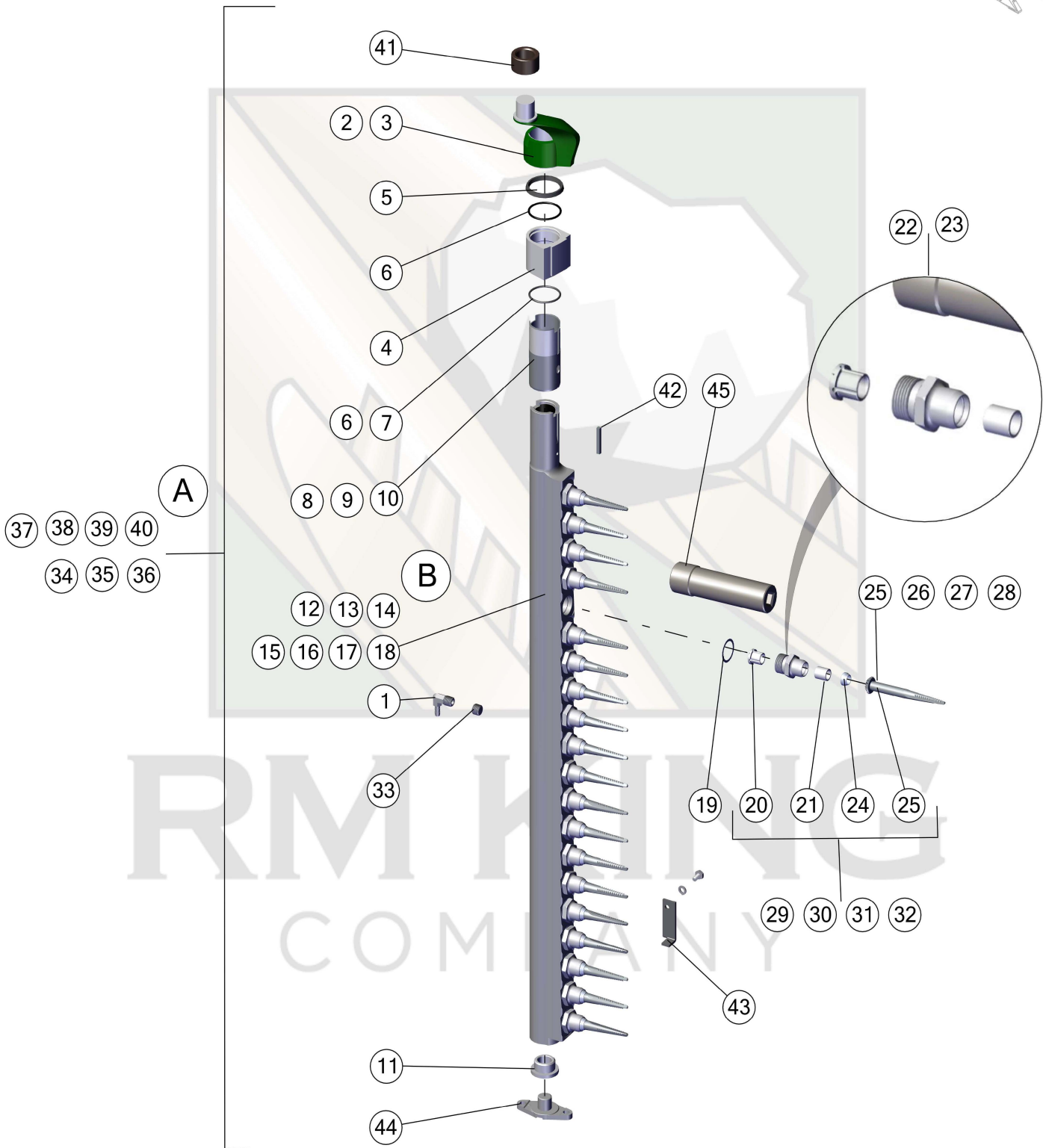
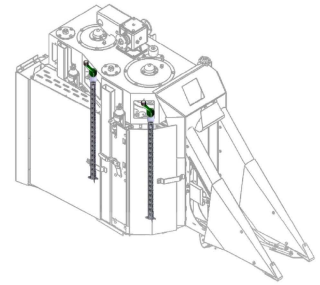


PICKER BAR AND SPINDLES

MODELS 9900 – CP690

Version 1.7



PICKER BAR AND SPINDLES

MODELS 9900 – CP690

Version 1.7



ID	Part Number	Description	Model	MFG
1	N115724	Brass Elbow	9900-9965	RMK
2	N114682	Cam Arm (Used)	Note 2	RMK
3	N198724	Cam Arm	Note 3	RMK
4	N370976	Journal	9970-CP690	RMK
5	N119589	Seal Upper	9910-9965	RMK
6	T19854	O-ring	9970-CP690	RMK
7	N119581	O-ring Lower	9910-9965	RMK
8	N117859	Bar Sleeve	Note 8	RMK
9	N195657	Bar Sleeve	Note 9	RMK
10	N279372	Bar Sleeve	9970-CP690	RMK
11	N374832	Bar Bushing	9900-CP690	RMK
12	AN192755	Bar L.H. 20 High	Note 12	RMK
13	AN192756	Bar R.H. 20 High	Note 13	RMK
14	AN192809	Bar L.H. 20 High	9930, 9950	RMK
15	AN192810	Bar R.H. 20 High	9930, 9950	RMK
16	AN193320	Bar R.H. 18 High	9960-9965	RMK
17	AN274501	Bar R.H. Pro-12	9970-CP690	RMK
18	AN273434	Bar R.H. Pro-16	9976-CP690	RMK
19	N110223	Shim 0.010"	9900-CP690	RMK
20	N113307	Bushing Flange	9900-CP690	RMK
21	N112394	Busing Plain	9900-CP690	RMK
22	AN111948	Spindle Nut R.H.	9900-CP690	RMK
23	AN111949	Spindle Nut L.H.	9900-9950	RMK

ID	Part Number	Description	Model	MFG
24	N279986	Spindle Nut Shield	9900-CP690	RMK
25	N190332	Spindle R.H.	9900-CP690	RMK
26	N190333	Spindle L.H.	9900-9950	RMK
27	N277078	Spindle R.H.	9900-CP690	RMK
28	N277079	Spindle L.H.	9900-9950	RMK
29	AN195082	Spindel Assy. R.H.	9900-CP690	RMK
30	AN195083	Spindle Assy. L.H.	9900-9950	RMK
31	AN274216	Spindle Assy. R.H.	9900-CP690	RMK
32	AN274217	Spindle Assy. L.H.	9900-9950	RMK
33	K15H558	Pipe Plug	9900-9965	RMK
34	AN192755CPT	Cpt. Bar L.H.	Note 34	RMK
35	AN192756CPT	Cpt. Bar R.H.	Note 35	RMK
36	AN194616	Cpt. Bar R.H.	Note 36	RMK
37	AN194617	Cpt. Bar L.H.	Note 37	RMK
38	AN193318	Cpt. Bar R.H.	9960-9965	RMK
39	AN276734	Cpt. Bar Pro-16 R.H.	9976-CP690	RMK
40	AN276740	Cpt Bar Pro-12 R.H.	9970-CP690	RMK
41	N193500	Cam Roller	9900-CP690	RMK
42	H64373	Shaft Key	9900-CP690	RMK
43	BARTAB	Bracket	9900-CP690	RMK
44	N112291	Bar Pivot	9900-CP690	RMK
45	RMK-118SKT	Socket	9900-CP690	RMK

NOTES:

2. COVERS MODELS 9900-9920, 9940.
3. N198724 REPLACES N195318. COVERS MODELS 9930, 9950, 9960-CP690.
4. N370976 REPLACES N275188.
6. T19854 REPLACES N119581.
8. COVERS MODELS 9900-9920, 9940 WITH KEYWAY.
9. COVERS MODELS 9930, 9950-9965 WITH KEYWAY.
10. COVERS MODELS 9970-CP690 WITH KEYWAY.
12. 9900-9920, 9940.
13. 9900-9920, 9940.
19. N110223 REPLACES 674980R2, L2889, AND 11264R.
24. N279986 REPLACES N111521.
27. EXTRA CHROME.
28. EXTRA CHROME.
31. EXTRA CHROME.
32. EXTRA CHROME.
34. 9900-9920, 9940.
35. 9900-9920, 9940.
36. 9930, 9950-9965.
37. 9930, 9950-9965.
39. AN276734 REPLACES AN273432.
40. AN276740 REPLACES AN274502.
43. BARTAB INCLUDES BRACKET AND MOUNTING HARDWARE. DRILLING AND TAPPING HOLE REQUIRED FOR NEW INSTALLATIONS.
 - A. INCLUDES ITEMS #1-33. 9900 - 65 REG. CHROME STANDARD. 9970 - CP690 XCR. STANDARD.
 - B. BAR INCLUDES BAR BUSHING #11 AND SLEEVE #'S 8-10 INSTALLED.

EMAIL: INFO@RMKING.COM
TEL: 559.266.0258