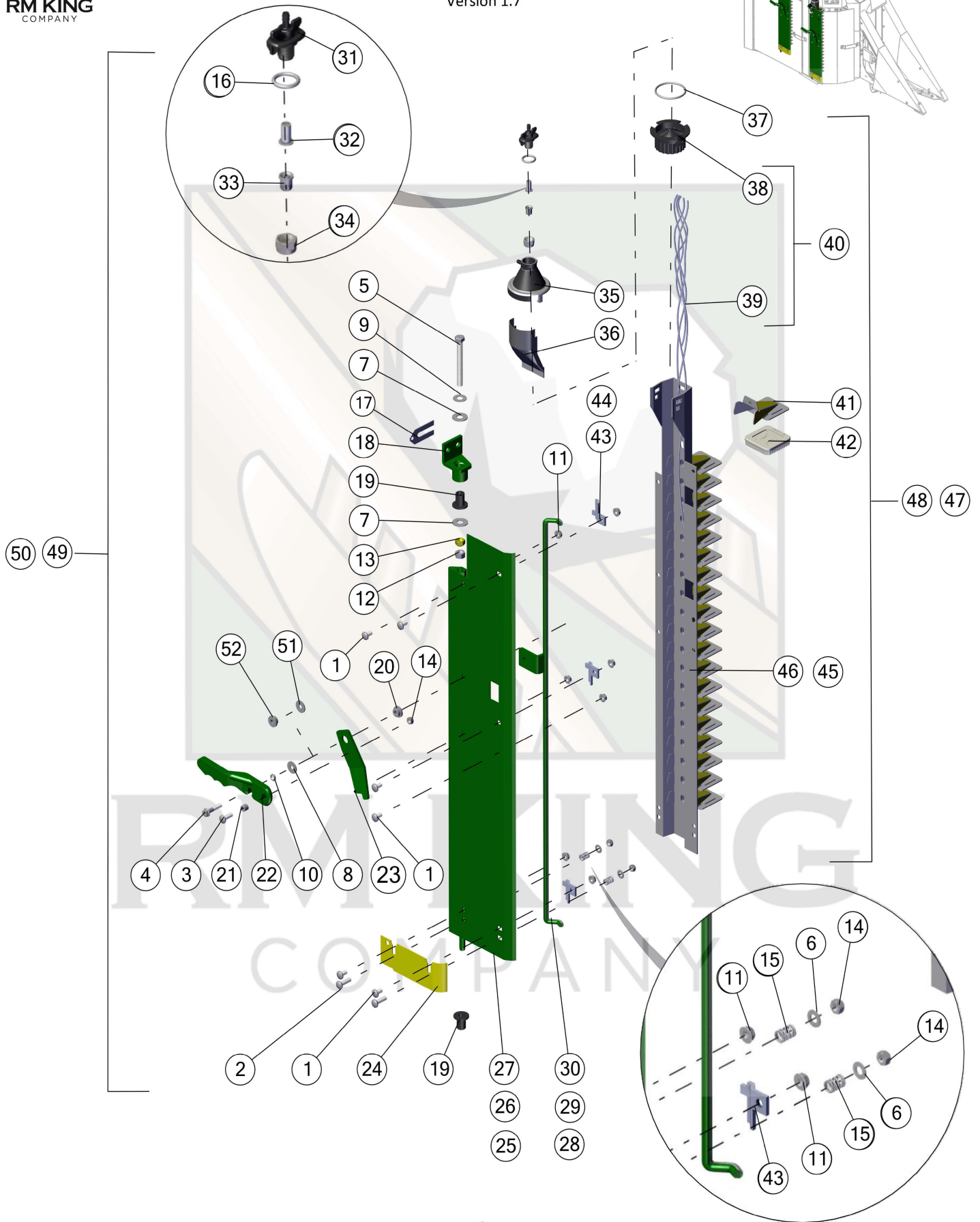
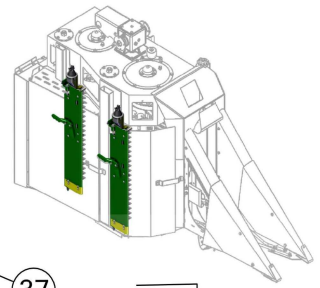


# MOISTENER COLUMN

MODELS 9970 – CP690

Version 1.7



# MOISTENER COLUMN

MODELS 9970 – CP690

Version 1.7



| ID | Part Number | Description       | Model      | MFG |
|----|-------------|-------------------|------------|-----|
| 1  | 03M7183     | Bolt - M8 x 16    | 9970-CP690 | RMK |
| 2  | 03M7186     | Bolt - M8 x 30    | 9970-CP690 | RMK |
| 3  | 03M7185     | Bolt - M8 x 25    | 9970-CP690 | RMK |
| 4  | 19M8317     | Bolt - M8 x 40    | 9970-CP690 | RMK |
| 5  | 19M7590     | Bolt - M12 x 100  | 9970-CP690 | RMK |
| 6  | 24H1136     | Washer            | 9970-CP690 | RMK |
| 7  | 24H1162     | Washer            | 9970-CP690 | OEM |
| 8  | 24H1224     | Washer            | 9970-7760  | OEM |
| 9  | N168012     | Washer            | 9970-CP690 | RMK |
| 10 | 14M7151     | Nut - M8 Jam      | 9970-7760  | RMK |
| 11 | E63525      | Nut - M8          | 9970-CP690 | RMK |
| 12 | 14M7275     | Nut - M12         | 9970-CP690 | RMK |
| 13 | A31867      | Locknut - M12     | 9970-CP690 | RMK |
| 14 | E64256      | Locknut - M8      | 9970-CP690 | RMK |
| 15 | R59468      | Spring            | 9970-CP690 | OEM |
| 16 | R495R       | O-ring            | 9970-CP690 | RMK |
| 17 | N276092     | Strap             | 9970-CP690 | OEM |
| 18 | N375754     | Adjuster          | 9970-CP690 | RMK |
| 19 | N277000     | Bushing           | 9970-CP690 | RMK |
| 20 | M110316     | Bushing           | 9970-7760  | OEM |
| 21 | H25220      | Bushing           | 9970-CP690 | OEM |
| 22 | N374492     | Handle            | 9970-CP690 | OEM |
| 23 | N373037     | Bracket           | 9970-CP690 | RMK |
| 24 | KK20615     | Angle             | 9970-CP690 | RMK |
| 25 | AN274510    | Door Pro-12       | 9970-9996  | OEM |
| 26 | AN274660    | Door Pro-16 Front | 9976-CP690 | RMK |
| 27 | AKK14424    | Door Pro-16 Rear  | 9976-CP690 | RMK |

| ID | Part Number  | Description        | Model      | MFG |
|----|--------------|--------------------|------------|-----|
| 28 | AN274513     | Latch Pro-12       | 9970-CP690 | RMK |
| 29 | AN274659     | Latch Pro-16 Front | 9976-CP690 | RMK |
| 30 | AN273512     | Latch Pro-16 Rear  | 9976-CP690 | RMK |
| 31 | N276745      | Hose Fitting       | 9970-CP690 | OEM |
| 32 | AB11379      | Strainer           | 9970-CP690 | RMK |
| 33 | B12283       | Nozzle             | 9970-CP690 | RMK |
| 34 | B12888       | Fitting            | 9970-CP690 | RMK |
| 35 | N276747      | Cover              | 9970-CP690 | RMK |
| 36 | N276748      | Cover              | 9970-CP690 | OEM |
| 37 | F1870R       | O-ring             | 9970-CP690 | RMK |
| 38 | N276746      | Distribution Plate | 9970-CP690 | RMK |
| 39 | N190923      | Tube               | 9970-CP690 | RMK |
| 40 | AN273019     | Tube Assy.         | 9970-CP690 | RMK |
| 41 | AN273816     | Pad Holder         | 9970-CP690 | RMK |
| 42 | N275607      | Moistener Pad      | 9970-CP690 | RMK |
| 43 | N275392      | Pivot Rod Bracket  | 9970-7760  | RMK |
| 44 | KK10725      | Pivot Rod Bracket  | CP690      | RMK |
| 45 | AN279610     | Holder Pro-12      | 9970-CP690 | RMK |
| 46 | AN279609     | Holder Pro-16      | 9976-CP690 | RMK |
| 47 | MOIST70P     | Stand Cpt. Pro-12  | 9970-CP690 | RMK |
| 48 | MOIST76P     | Stand Cpt. Pro-16  | 9976-CP690 | RMK |
| 49 | MOISTDRRR76  | Door Assy.         | 9976-7760  | RMK |
| 50 | MOISTDRFRT76 | Door Assy.         | 9976-7760  | RMK |
| 51 | 24H1378      | Washer             | CP690      | OEM |
| 52 | N411249      | Spacer             | CP690      | OEM |

**NOTES:**

- 18. N375754 REPLACES AN273799.**
- 22. N374492 REPLACES N279504.**
- 24. KK20615 REPLACES N275882.**
- 27. AKK14424 REPLACES AN273517.**
- 31. AB11379 REPLACES PS311, PM31140, AND PM26642.**
- 33. B12283 USE WITH SPINDLE CLEANER.**
- 34. B12888 WITH MOISTENER AGENT.**
- 40. AN273019 INCLUDES N190923 TUBING AND N276746 DISTRIBUTION PLATE.**
- 45. AN279610 REPLACES AN274512.**
- 46. AN279609 REPLACES AN273474.**
- 47. MOIST70P INCLUDES COLUMN, PAD, MANIFOLD AND TUBE ASSEMBLY.**
- 48. MOIST76P INCLUDES COLUMN, PAD, MANIFOLD AND TUBE ASSEMBLY.**
- 51-52. 52 AND 51 (N411249 AND 24H1378) REPLACES 10, 8 AND 20 (14M7150, 24H1224, AND M110316) IN CP690.**