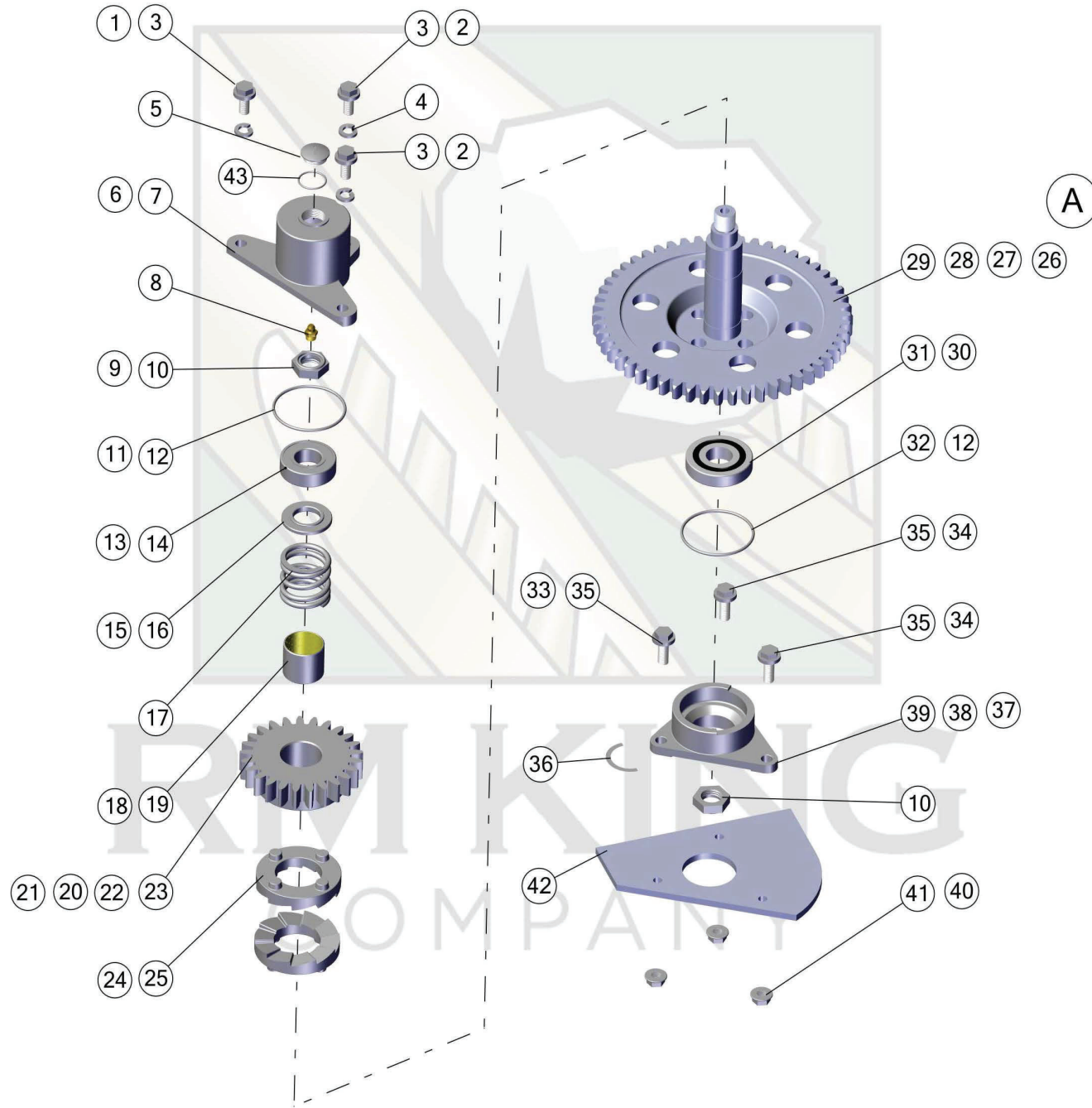
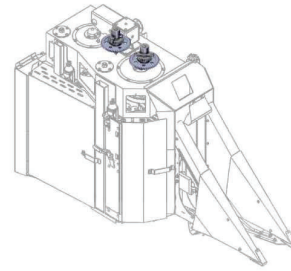


DRUM SLIP CLUTCH AND IDLER GEAR

MODELS 9900 – CP690

Version 1.7



EMAIL: INFO@RMKING.COM
TEL: 559.266.0258

DRUM SLIP CLUTCH AND IDLER GEAR

MODELS 9900 – CP690

Version 1.7

ID	Part Number	Description	Model	MFG
1	19H1726	Bolt - 3/8 x 2 1/4	9900-9965	RMK
2	19H3239	Bolt - 3/8 x 1 1/4	9960-9965	RMK
3	19M7784	Bolt - M10 x 20	9970-CP690	RMK
4	12H304	Lock Washer	9900-9965	RMK
5	N278323	Cap	9970-CP690	OEM
6	N272328	Housing	9900-9965	OEM
7	N371737	Housing	9970-CP690	RMK
8	JD7759	Lubrication Fitting	9900-CP690	RMK
9	H34753	Locknut	9900-9965	RMK
10	N275033	Locknut	9970-CP690	RMK
11	B3690R	O-ring	9960-9965	RMK
12	U40708	O-ring	9960-9965	RMK
13	JD7142	Bearing	9900-9965	RMK
14	JD9321	Bearing	9970-CP690	RMK
15	N110133	Washer	9900-9965	OEM
16	N278401	Washer	9970-CP690	OEM
17	N131738	Spring	9900-CP690	RMK
18	L1713C	Bushing	9900-9965	RMK
19	N275269	Bushing Pro-16	9970-CP690	RMK
20	AN193393	Spur Gear 23 Tooth	9900-9965	RMK
21	AN193118	Spur Gear 24 Tooth	9965	RMK
22	AN273802	Spur Gear 23 Tooth	9970-9976	RMK

ID	Part Number	Description	Model	MFG
23	AN273468	Spur Gear 25 Tooth	9976-CP690	RMK
24	N190955	Slip Clutch L.H.	9900-9950	OEM
25	N190954	Slip Clutch R.H.	9900-CP690	RMK
26	AN110124	Drive Gear	9900-9950	RMK
27	AN272285	Drive Gear	9960-9965	RMK
28	KN274017	Drive Gear 53 Tooth	9970-CP690	RMK
29	KN274016	Drive Gear 55 Tooth	9976-CP690	RMK
30	JD9324	Bearing	9900-9965	RMK
31	JD9467	Bearing	9970-CP690	RMK
32	M43518	O-ring	9970-CP690	RMK
33	19H1905	Bolt - 5/16 x 1	9900-9965	RMK
34	21H1226	Bolt - 5/16 x 7/8	9900-9965	RMK
35	19M7785	Bolt - M10 x 25	9970-CP690	RMK
36	N275931	Shim	9900-CP690	OEM
37	N110137	Housing	9900-9950	OEM
38	N199063	Housing	9960-9965	RMK
39	N371736	Housing	9970-CP690	RMK
40	14H785	Nut - 5/16	9900-9965	RMK
41	E63526	Nut - M10	9970-CP690	RMK
42	N371736P	Idler Gear Support Plate	9970-CP690	RMK
43	T77858	O-ring	CP690	OEM

NOTES:

- 6. N272328 REPLACES N193324.
- 7. N371737 REPLACES N274010.
- 10. N275033 REPLACES N371715 AND N276683 WHEN USED WITH KN274017 OR KN274016.
- 28. KN274017 REPLACES N274017, N274013, AND N276291. MADE AS ONE WELDED UNIT TO IMPROVE QUALITY AND WEAR ABILITY.
- 29. KN274016 REPLACES N274016, N274013, AND N276291. MADE AS ONE WELDED UNIT TO IMPROVE QUALITY AND WEAR ABILITY.
- 39. N371736 REPLACES N274011.
- 42. N371736P IDLER GEAR SUPPORT PLATE IS DESIGNED TO REINFORCE CABINET AND PREVENT CRACKING.
- A. IDLER GEARS MADE AS ONE WELDED ASSEMBLY OF GEAR, SHAFT, AND SPACER WHICH INCREASES LIFE OF PART.

EMAIL: INFO@RMKING.COM
TEL: 559.266.0258